

KEY

LINTEL HEIGHTS

A = 140MM
B = 215MM
C = 290MM

LINTEL DEPTHS

D = 100MM
E = 120MM

140MM AND 150MM DEPTHS ALSO AVAILABLE

NOTE;
SPLAYED LINTELS INCORPORATE AN 80MM SPLAY TO EACH END

STRUCTURAL OPENING SIZES AVAILABLE INCLUDE:
488MM, 630MM, 915MM, 1200MM, 1770MM

NON-STANDARD LENGTHS MANUFACTURED TO ORDER

IMPORTANT NOTICE: SEMI-DRY CAST LINTELS ARE NON LOAD BEARING AND SHOULD BE USED IN CONJUNCTION WITH A SUITABLE STRUCTURAL LINTEL AS PER ENGINEER OR MANUFACTURERS RECOMMENDATIONS

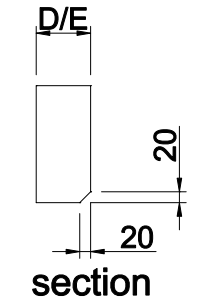
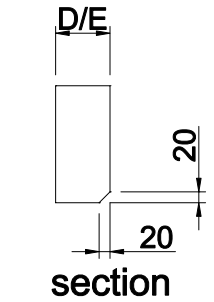
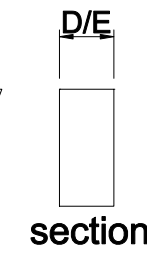
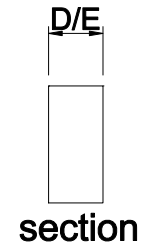
TYPICAL WEIGHTS

140MM X 100MM - APPROX 30KG PER LM
215MM X 100MM - APPROX 46KG PER LM
290MM X 100MM - APPROX 69KG PER LM

140MM X 120MM - APPROX 36KG PER LM
215MM X 120MM - APPROX 55KG PER LM
290MM X 120MM - APPROX 75KG PER LM

UNITS CAN BE SUPPLIED WITH CAST IN LIFTING SOCKETS IF SPECIFIED

UNITS EXCEEDING SLENDERNESS RATIO WILL BE SUPPLIED SECTIONAL (PLEASE CONSULT SALES TEAM)



PROCTER CAST STONE HEADS